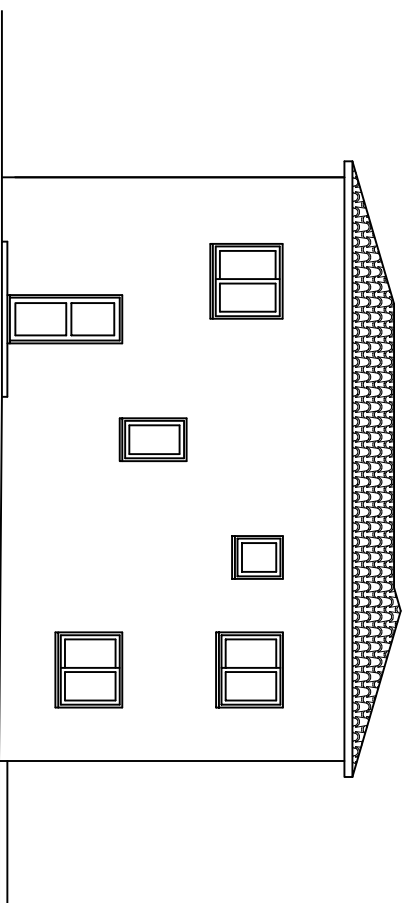
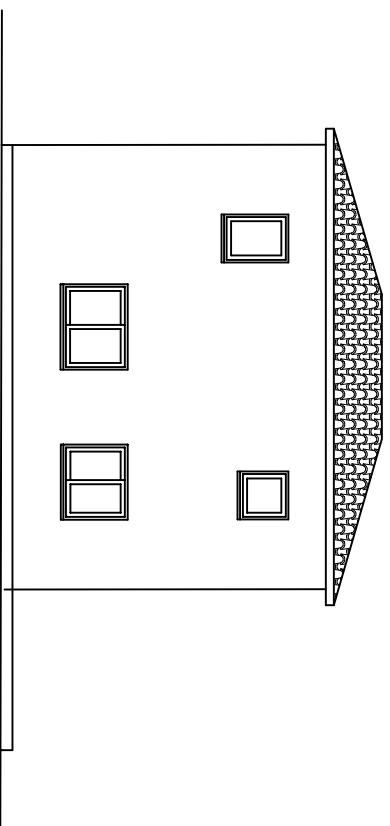


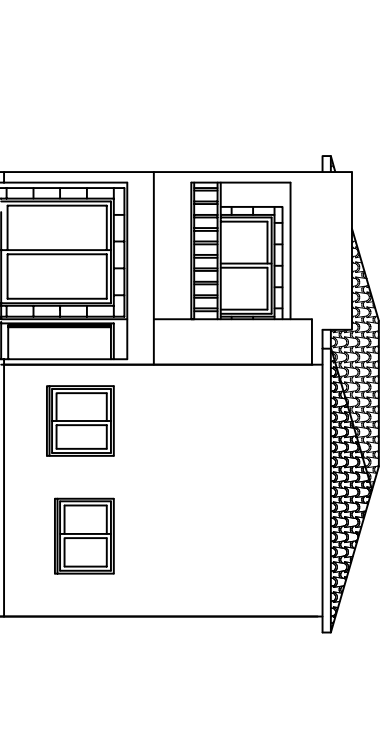
FRONT ELEVATION



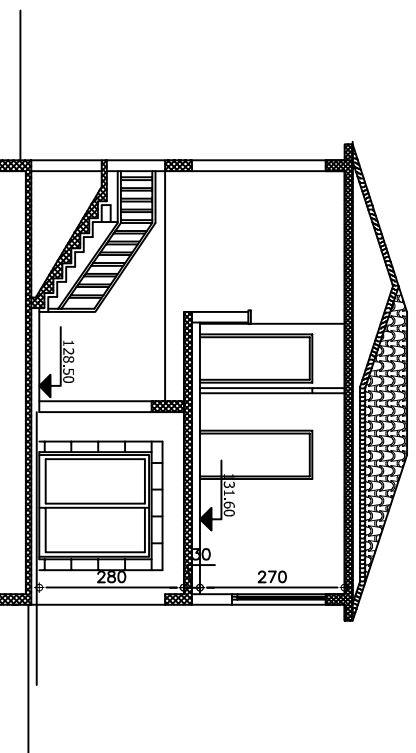
BACK ELEVATION



LEFT SIDE ELEVATION



RIGHT SIDE ELEVATION



SECTION A-A

ΥΛΙΚΑ	
1	ΕΞΩΤΕΡΙΚΟΙ ΤΟΙΧΟΙ: ΜΙΤΟΓΙΑ
2	ΠΟΡΤΕΣ ΕΙΣΟΔΟΥ: ΕΥΑΙΝΕΣ
3	ΚΑΤΚΕΛΟ: ΜΕΤΑΛΛΙΚΟ
4	ΕΞΩΤΕΡΙΚΕΣ ΣΥΝΟΜΕΝΕΣ ΠΟΡΤΕΣ ΚΑΙ ΠΑΡΑΘΥΡΑ: ΑΛΟΥΜΙΝΙΟ

REV 1.1 24/08/05 19748  
 - Change of the roof



**R. ARISTODEMOU**  
 ARCHITECTS - ENGINEERS  
 8 Aprilou 1st Str. P.O.Box60269 ,8101 Pefos ,Cyprus  
 Tel:+357 6 932503 / 932368, Fax +357 6 938290  
 E-mail: archit@aristodevelopers.com  
 URL : <http://www.aristodevelopers.com>

Rev.	Study by	Drawn by	Inspected by	Date
1.0	Architect Kyriakos A.	IACOVOΣ IAC.	R.Aristodemou	29/04/04
1.1	Architect Kyriakos A.	Sol	R.Aristodemou	24/08/05

Copy No.: Issued to: C  I

Project: Ha-Polami B Panorama villas 9 V6  
 Location : Ha - Polami B  
 Type : 3 BDR VILLAS  
 Job No : 900

Title: ELEVATIONS SECTIONS A-A	Sheet No A3	Scale (cm)
--------------------------------	-------------	------------

**Aristo Developers**  
 ARCHITECTS - CONTRACTORS - DEVELOPERS  
 ISO 9001 CERTIFIED COMPANY  
 Certificate Number 10134